

## PULSE USER INTERFACE BATTERY UPGRADE KIT (PART #2A03111)

This document describes the process of fitting the PULSE User Interface Battery Upgrade Kit (Part #2A03111).

Before commencing ensure to observe the following:

- Isolate electrical supply before opening cabinet for maintenance. Physically lock, restrict access to, or tag the circuit breakers you turn off when working on the fuel delivery system.
- It is vital to take anti-static precautions when working on the system's electronic components.

The Kit consists of the following components:

1. PCA Board (Part #PV9833902)



PCA Board

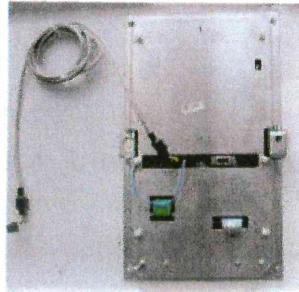
2. PULSE Battery Pack (Part #2A03110)



Battery Pack

## STEP ONE - Prepare the Head Cabinet

There are two types of Head Cabinets, either with a price display or without. This process varies slightly for head cabinets with a price display.



Head Cabinet without  
price display



Head Cabinet with  
price display

1. To allow access to the existing battery pack, remove the aluminium shield plate.

Ensure all  
cables are  
released before  
removing the  
shield



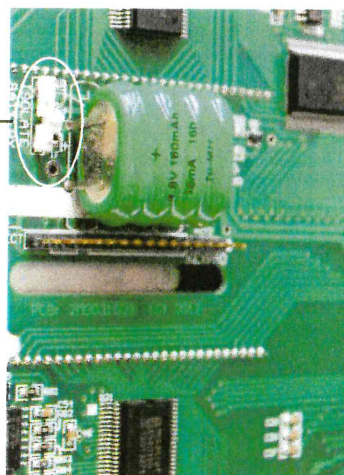
Unfasten nylon dome  
nuts



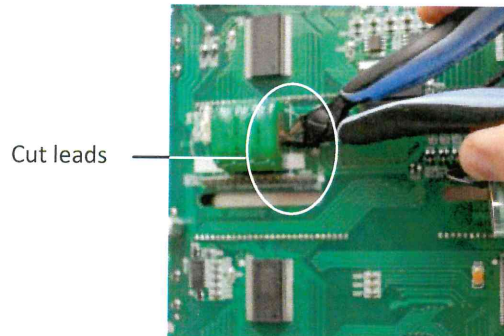
Remove aluminium  
shield plate

2. If the user interface board is version 8 or later disconnect the isolator switch link located to the left of the battery. Where the user interface PCA is an earlier version, the isolator switch will not exist.

Isolator Switch

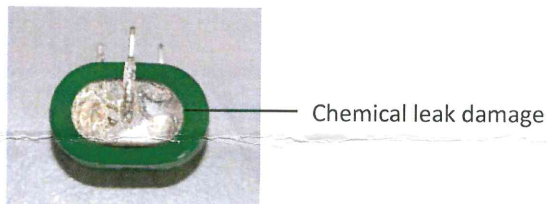


3. Remove the old battery by cutting the leads to it. There are two on the left and one on the right.



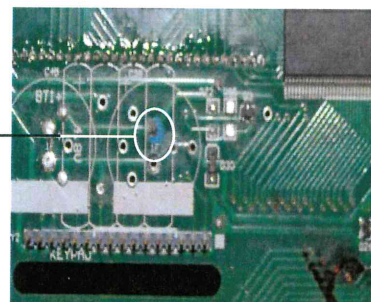
4. Once removed check the battery for evidence of leakage. If the battery has leaked chemical, generally this will have caused damage to the User Interface Board. If there is visible or suspected damage to the User Interface Board, it must be replaced.

The following picture is an example of a battery that has leaked chemical.

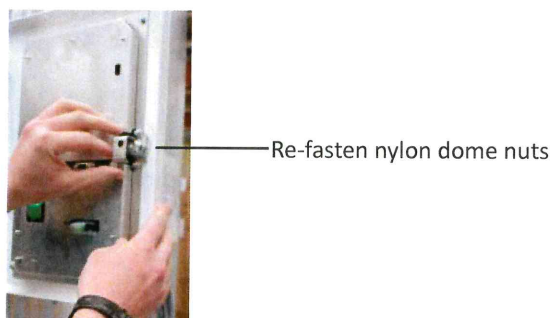


The following picture is of a damaged User Interface board as a result of leaking batteries.

Note the blue stain is a common symptom of damage to the UI Board cause by a battery leak



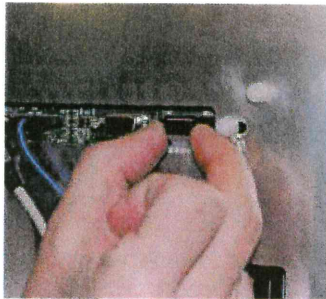
5. Replace the aluminium shield plate and reconnect cabling



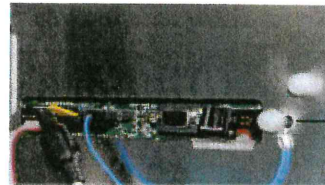


## STEP TWO - Connect the Battery Upgrade Kit

1. For the Head Cabinet with the Price Display, disconnect the ribbon cable attached to the User Interface.



Disconnecting ribbon cable



Ensure the blue  
earth wire is  
firmly reconnected

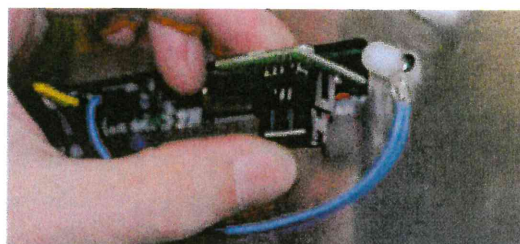
Ribbon cable disconnected

2. Plug the Battery BUP (Back Up Power) Board into the User Interface board using position J22



Fitting BUP board to  
position J22

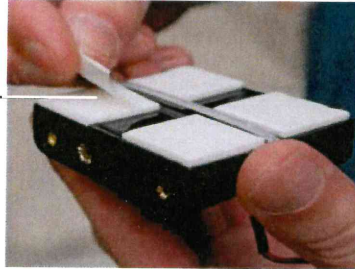
3. For the Head Cabinet with a Price Display, plug the price display ribbon cable into the socket directly underneath the Battery BUP.



Attach price display ribbon cable

4. Prepare the battery pack by removing the backing tape to expose the adhesive.

Remove adhesive backing

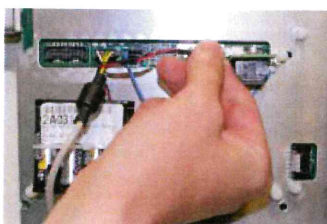


5. Attach the Battery pack to the shield using the adhesive. Ensure it is placed near the BUP board as shown below.

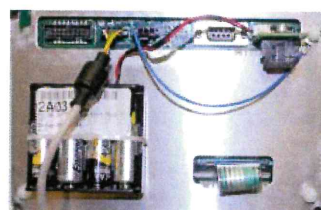
Fix battery pack to shield



6. Plug the battery pack into the BUP Board.



Plug battery pack into BUP



Installation complete

7. Once fitted, test the battery upgrade kit is working by turning the pump on and allowing the display to populate. Turn the pump off again and check that the display holds the information without power. If the Battery Pack is working correctly the display should be able to hold the information for at least 15 minutes.